

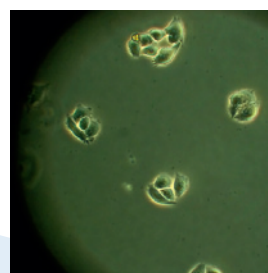
„Linking Research and Patients' Needs”

# Life Sciences Call 2011

The second project call  
“Linking Research and Patients' Needs”  
of the Vienna Science and Technology Fund (WWTF)  
addresses

- ▶ Viennese Universities and non-university research institutions as well as scientists and researchers in Vienna, including researchers moving to Vienna as a result of this call,
- ▶ that would like to investigate a multi-annual (2-4 years) scientific project at the interface between basic and clinical research, building on a clear hypothesis.
- ▶ Moreover projects should include a clear statement on medium term social and/or economic benefits.

In total EUR 5 million are available for this call.  
Proposals can be submitted until 25 January 2011, 2pm.  
For more detailed information please refer to [www.wwtf.at](http://www.wwtf.at)  
(submission system)



#### Contact WWTF

Daniela Frischer, Klaus Zinöcker  
[daniela.frischer@wwtf.at](mailto:daniela.frischer@wwtf.at)  
[klaus.zinoecker@wwtf.at](mailto:klaus.zinoecker@wwtf.at)  
Tel.: +43 1 4023143-0



Wiener Wissenschafts-, Forschungs- und Technologiefonds

A-1090 Wien, Währinger Straße 3/15a, Tel. +43-1-402 31 43-10, Fax-DW 20, Email: [office@wwtf.at](mailto:office@wwtf.at)

In cooperation with LISA Vienna Region



life science austria  
vienna region



Wiener Wissenschafts-, Forschungs- und Technologiefonds

# WWTF „Life Sciences“ Call 2011: Linking Research and Patients' Needs

## Focus and key facts

With this call we want to encourage scientific projects linking research and patients' needs. This means that the funding focus of WWTF concentrates on **strengthening linkages between outstanding lab research and medical/clinical research**. Fostering cooperation between basic scientists and clinicians is regarded as a tremendous opportunity to strengthen Vienna's life sciences cluster and to open up new avenues to develop novel patient oriented approaches. The overall budget for this call is EUR 5 million. The project call 2011 addresses Viennese Universities and non-university research institutions as well as scientists and researchers in Vienna.

### WWTF provides funding for scientific projects which should:

- ▶ be hypothesis driven with anticipated results leading to better patient treatment and/or diagnosis and go beyond basic biomedical research
- ▶ improve understanding of mechanisms leading to disease
- ▶ expand current views and knowledge of patient targeted therapies, diagnoses and prevention of diseases
- ▶ include a clear statement of the perspective for medium term medical plus societal and/or economic benefits
- ▶ last two to four years and be in the range of EUR 200.000 to EUR 800.000 of requested funding.
- ▶ Projects from fields like biomedical engineering/ biomechanics are also invited to take part in this competition.

### Please also consider the following Do's and Don'ts:

- ▶ Access to patients must be available as needed for the project.
- ▶ Applicants should dedicate a considerable part of their time to the project (Hiring of additional staff with funding money in order to release the PI/ key researchers from daily clinical routine is permissible).
- ▶ No clinical trials focusing on classical drug development.
- ▶ No projects solely developing animal models.
- ▶ No industry involvement; no funding of industry.

Generally, applicants for funding as well as the submitted project proposals need to be characterized by **top scientific quality**. Beside the quality of the team and the suggested approach, the jury process will include a judgement of the potential social or economic impact of the project. Additionally, as secondary criteria, WWTF wants to especially encourage **women and young researchers** to apply for funding and to act as principal investigators. This means that in case there are more top quality proposals than funding available, those top proposals with women and young researchers as principal investigators will be favoured. For the detailed criteria of evaluation - on which reviewers and a jury composed of scientists from abroad will base their assessment - kindly refer to the WWTF Guidelines and the WWTF homepage.

### Contact Details

Wiener Wissenschafts-, Forschungs- und Technologiefonds (WWTF)

Daniela Frischer; Klaus Zinöcker

Währinger Strasse 3/15a

1090 Wien

Tel: +43 1 402 31 43-15 or -12

e-mail: [daniela.frischer@wwtf.at](mailto:daniela.frischer@wwtf.at); [klaus.zinoecker@wwtf.at](mailto:klaus.zinoecker@wwtf.at)